

# Charge and Discharge Management Board

## UPS POWER MANAGEMENT CONTROL BOARD FOR For 6S Li-ion/Li-Polymer Battery Packs

6S Li-ion and Li-Polymer battery pack UPS, With intelligent MCU control, with 16V DC-IN and 16V DC-OUT;  
Also with 5V 2.1A USB output

Manufacturer Part Number: HCX-H284V1 (YDDY-H284V1-003)

This Board is specially designed for Li-ion/Li-Polymer Battery Packs, Compatible with 6S battery Packs, with intelligent MCU control, with Gas/Fuel gauge, with DC 16V input, with 5V 2.1A USB output, with DC output 16V @ 3.5A (Max)

This board is the mother board for 4S battery packs portable UPS, can offer Uninterrupted Power Supply, giving customers the powers all the time.

\* Input: 16V 4A (Max)

\* USB Output: 5V 2.1A

\* DC Output: 16V 3.5A (Max)

| Item | Contents                                   |   | Criteria(Adjustable)            |
|------|--|---|---------------------------------|
| 1    | Model                                      | HCX-H284V1 (YDDY-H284V1-003)  | UPS Power Management Board (6S) |
| 2    | Battery Type                               | Compatible with Li-ion/Li-Polymer   |                                 |
| 3    | Battery Packs                              | 6S Battery Packs  |                                 |
| 4    | DC Input                                   | 16V   |                                 |
| 5    | USB Output                                 | 5V 2.1A   |                                 |
| 6    | DC Output                                  | 16V 3.5A (max)  |                                 |
| 7    | Fuel/Gas Gauge                             | 3 LEDs=one for discharge indicator,one for fully charged indicator,one for charging indicator(with different colors,check the picture above);<br>During discharging,the "Discharge Blue LED" will be on;<br>When the Power is low,the "Charge Red LED" will start blinking;<br>During charging,the" charge Red LED" will be on;<br>After fully charged,the "Fully Charged Blue LED" will be on; |                                 |
| 8    | Over Charge (per cell)                     | Overcharge Protection Voltage   | 4300±50mV                       |
|      |  | Overcharge Recovery Voltage   | 4050±100mV                      |
| 9    | Over Discharge (per cell)                  | Over Discharge Protection Voltage   | 2400±100mV                      |
|      |  | Over Discharge Recovery Voltage   | 3000±100mV                      |
| 10   | Resistance and Self-Consumption (per cell) | Inner Resistance  | ≤100mΩ                          |
|      |  | Self-Consumption  | ≤200uA                          |
| 11   | Size (L*W*H)                               | L78.7mm*W35mm*H15mm   |                                 |

### LiTech Power Co., Ltd

Factory Dongguan: 4F, Bldg B, RuiXin HengYe Industrial Park, TaiXing Rd # 18A, ShiGu District, TangXia Town, DongGuan, China

Factory Shenzhen: 3F, Bldg 3, Fulian Industrial Park, Heping Industrial area, Jianhui Rd, Longhua, ShenZhen, China

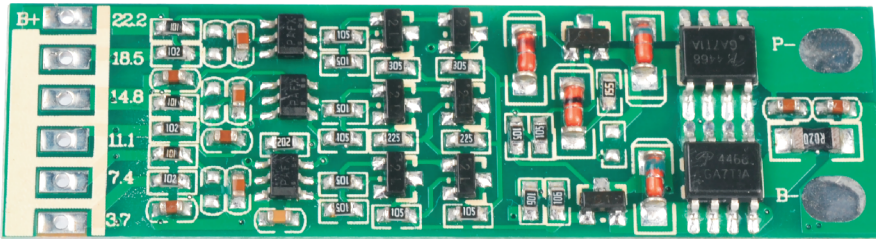
Tele: +86 769 8203 3052 | Fax: +86 769 82033050  
www.LiTechPower.com | info@LiTechPower.com

Specifications and data are subject to change without notice. Contact LiTech Power for latest information.

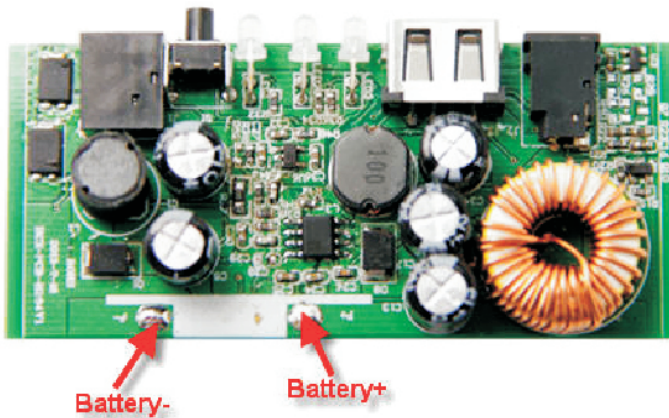
Copyright © LiTech Power Co.,Ltd. All Rights Reserved.

**Connection:**

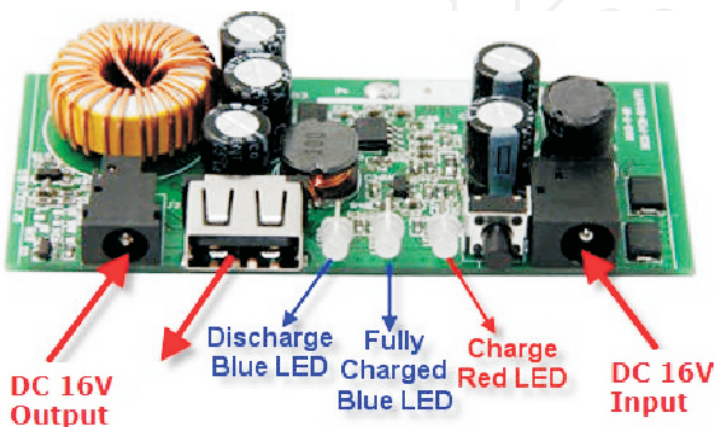
1) Please connect the 6S battery pack to the 6S PCM(HCX-H062V1)



2) Then Please connect the battery packs with PCM to the mother board as below



3) Operation diagram



Note: Characteristics subject to change without notice

LiTech Power Co., Ltd

Factory Dongguan: 4F, Bldg B, RuiXin HengYe Industrial Park, TaiXing Rd # 18A, ShiGu District, TangXia Town, DongGuan, China

Factory Shenzhen: 3F, Bldg 3, Fulian Industrial Park, Heping Industrial area, Jianhui Rd, Longhua, ShenZhen, China

Tele: +86 769 8203 3052 | Fax: +86 769 82033050  
www.LiTechPower.com | info@LiTechPower.com

Specifications and data are subject to change without notice. Contact LiTech Power for latest information.

Copyright © LiTech Power Co.,Ltd. All Rights Reserved.