

Protection Circuit Module

PCM / BMS / PCB

For 37V 10S Li-ion/Li-Polymer Battery Packs

Item		Contents	Criteria(Adjustable)
1	Model	HCX-D725L110S15A-07/028XY-AAA11	10S-15A working current
2	Voltage	Charging voltage	42V
3	Current	Maximal continuous charging current	5A (Charge Over Current \geq 14A)
		Maximal continuous discharging current	15A
		Current consumption	\leq 100 μ A
4	Overcharge Protection	Over charge detection voltage	4.25V \pm 0.025V
		Over charge detection delay time	700mS-1300mS
		Over charge release voltage	4.15V \pm 0.05V
5	Over Discharge Protection	Over discharge detection voltage	2.7V \pm 0.05V
		Over discharge detection delay time	0.7S-1.3S
		Over discharge release voltage	3.0V \pm 0.1V
6	Over Current Protection (1st Protection)	Over current detection current	30A \pm 10A / 0.1 \pm 0.01V
		Detection delay time	330mS \pm 100mS
		Release condition	Cut load / charge to recover
7	Over Current Protection (2nd Protection)	Over current detection current	60A \pm 10A / 0.2 \pm 0.02V
		Detection delay time	33mS \pm 10mS
		Release condition	Cut load / charge to recover
8	Short Circuit Protection	Short circuit detection current	300A-550A (external resistance \leq 0.1 Ω)
		Detection delay time	<280 μ S (fixed)
		Release condition	Cut load / charge to recover
9	Balance	Balance voltage for single cell	/
		Balance current for single cell	/
10	Temperature Protection	Temperature Switch	/
		NTC (10KNTC B=3435)	50 $^{\circ}$ C \pm 5 $^{\circ}$ C
11	Resistance	Inner resistance	\leq 20m Ω
12	Temperature	Operating temperature range	0 ~ +85 $^{\circ}$ C
		Storage temperature range	0 ~ +85 $^{\circ}$ C
13	Size (L*W*H)	L60mm*W34mm*H10mm	

Note: Characteristics subject to change without notice

LiTech Power Co., Ltd

Factory Dongguan: 4F, Bldg B, RuiXin HengYe Industrial Park, TaiXing Rd # 18A, ShiGu District, TangXia Town, DongGuan, China

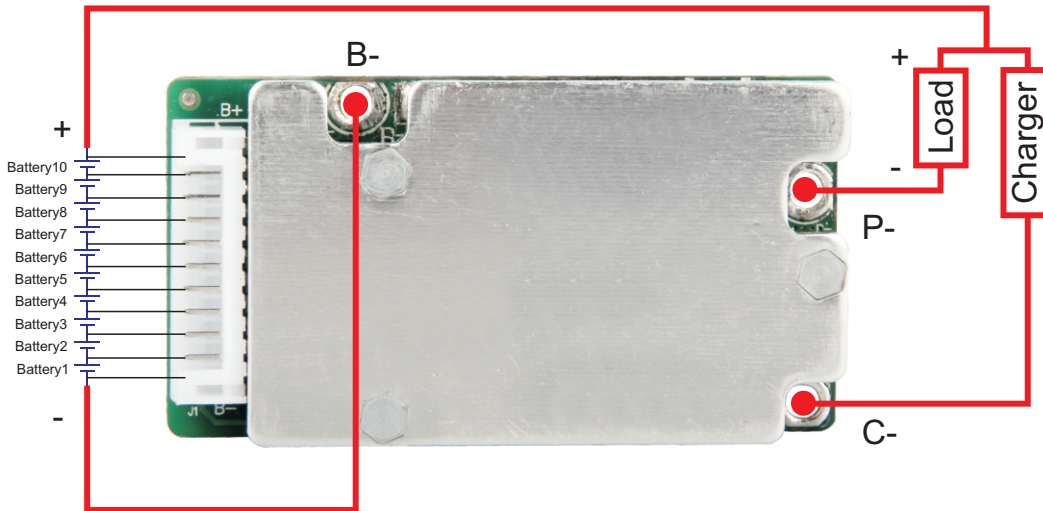
Factory Shenzhen: 3F, Bldg 3, Fulian Industrial Park, Heping Industrial area, Jianhui Rd, Longhua, ShenZhen, China

Tele: +86 769 8203 3052 | Fax: +86 769 82033050
www.LiTechPower.com | info@LiTechPower.com

Specifications and data are subject to change without notice. Contact LiTech Power for latest information.

Copyright © LiTech Power Co.,Ltd. All Rights Reserved.

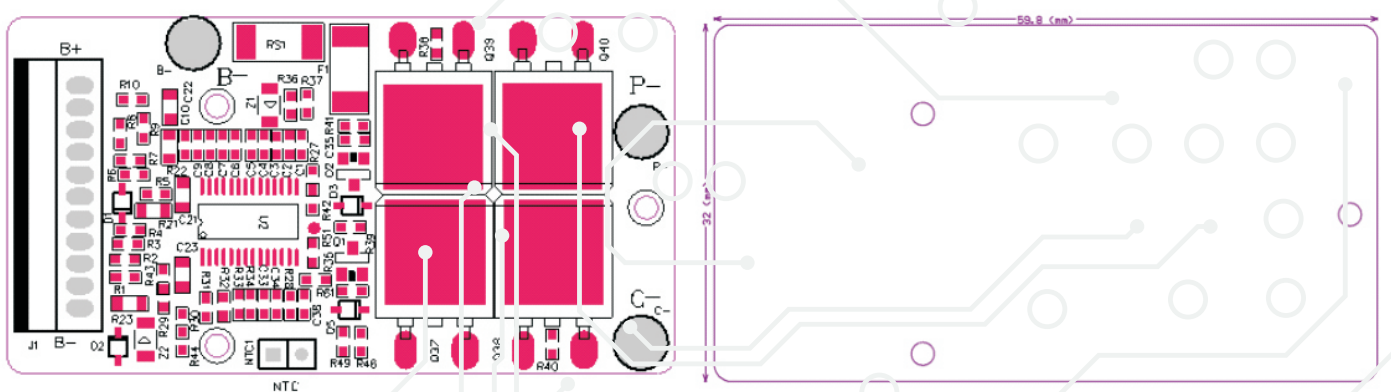
Connection Diagram:



Remarks:

- Charge, Discharge at different terminals
- P+=B+/Charge+/Discharge+
- Ch=Charge-
- P-= Discharge-

PCB Layout:



Note: Characteristics subject to change without notice

LiTech Power Co., Ltd

Factory Dongguan: 4F, Bldg B, RuiXin HengYe Industrial Park, TaiXing Rd # 18A, ShiGu District, TangXia Town, DongGuan, China

Factory Shenzhen: 3F, Bldg 3, Fulian Industrial Park, Heping Industrial area, Jianhui Rd, Longhua, ShenZhen, China

Tele: +86 769 8203 3052 | Fax: +86 769 82033050

www.LiTechPower.com | info@LiTechPower.com

Specifications and data are subject to change without notice. Contact LiTech Power for latest information.

Copyright © LiTech Power Co.,Ltd. All Rights Reserved.