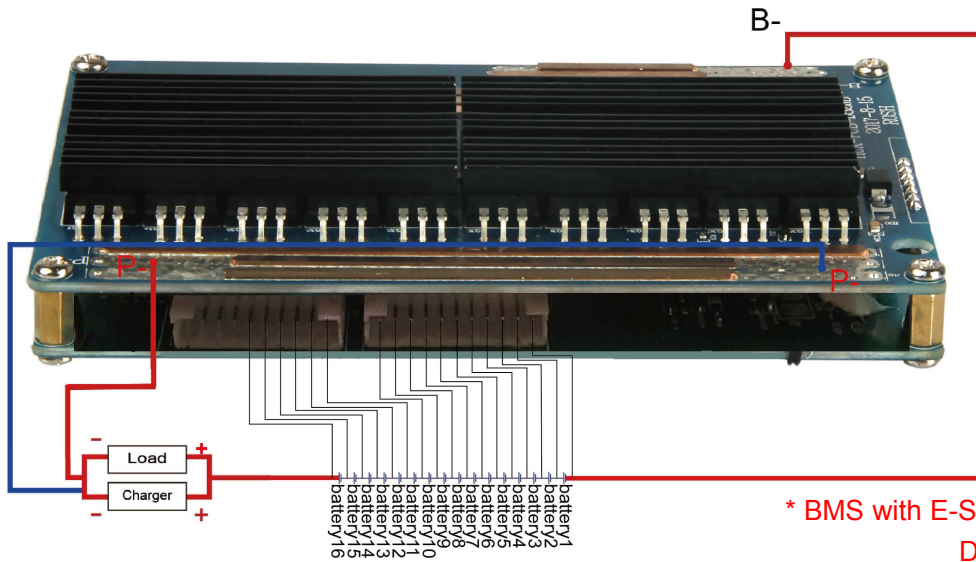


Data Sheet

Item	Contents		Criteria (Adjustable)
1	Model	HCX-D596V1LI16S70A-03 / S8252 AAH	16S-70A working current
2	Voltage	Charging voltage	67.2V
3	Current	Maximal continuous charging current	70A
		Maximal continuous discharging current	70A
		Current consumption	≤100μA
4	Overcharge Protection	Over charge detection voltage	4.25V±0.025V
		Over charge detection delay time	700mS-1300mS
		Over charge release voltage	4.1V±0.05V
5	Over Discharge Protection	Over discharge detection voltage	3.0V±0.07V
		Over discharge detection delay time	80mS-170mS
		Over discharge release voltage	3.0V±0.1V
6	Over Current Protection (1 st Protection)	Over current detection current	140A±20A
		Detection delay time	174mS-406mS
		Release condition	Cut load, automatically recover
7	Over Current Protection (2 nd Protection)	Over current detection current	230A±30A
		Detection delay time	10mS-25mS
		Release condition	Cut load, automatically recover
8	Short Circuit Protection	Short circuit detection current	≥630A
		Detection delay time	100μS-600μS
		Detection condition	Cut load, automatically recover
9	Balance	Balance voltage for single cell	4.20V±0.025V
		Balance current for single cell	126mA±15mA
10	Resistance	Inner resistance	≤20mΩ
11	Temperature	Operating temperature range	0 ~ +85°C
		Storage temperature range	0 ~ +85°C
12	Size (L*W*T)	L139mm*W62mm*T23mm	

*Note: Characteristics subject to change without notice.

Connection Diagram

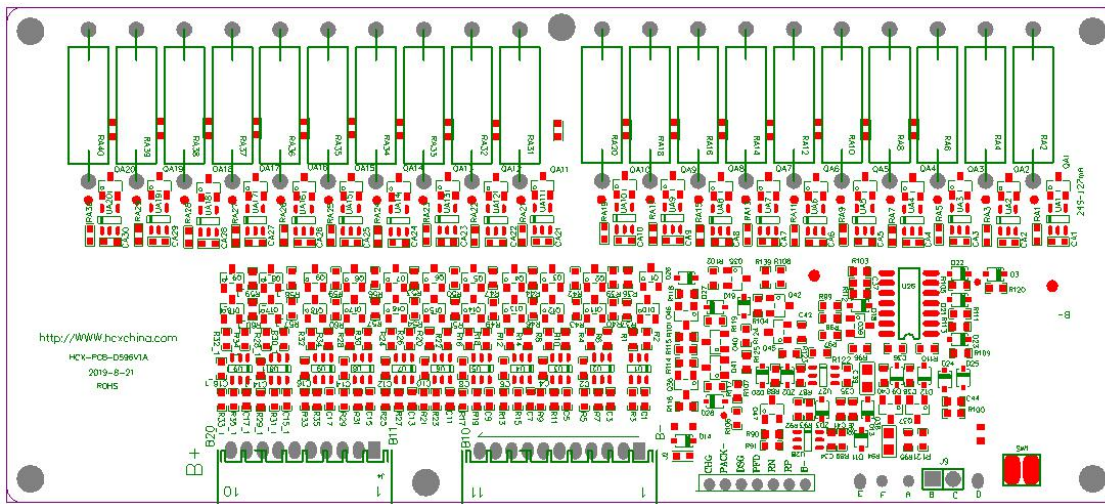


Remarks:

Charge, Discharge at same Port
 P+ = B+ / Charge+ / Discharge+
 P- = Charge- / Discharge-

* BMS with E-Switch/ON-OFF Switch (optional)
 During charging and discharging,
 The Switch should be on (connected)

PCB Layout:



*Note: Characteristics subject to change without notice.