

Protection Circuit Module

PCM / BMS / PCB

For 37V 10S Li-ion/Li-Polymer Battery Packs

Item		Contents	Criteria(Adjustable)
1	Model	HCX-D704L110S40A-04/G3M	10S-40A working current
2	Voltage	Charging voltage	42V
3	Current	Maximal continuous charging current	20A
		Maximal continuous discharging current	40A
		Current consumption	≤50μA
4	Overcharge Protection	Over charge detection voltage	4.28V±0.05V
		Over charge detection delay time	200ms(max)
		Over charge release voltage	4.08±0.1V
5	Over Discharge Protection	Over discharge detection voltage	2.80±0.1V
		Over discharge detection delay time	120ms(max)
		Over discharge release voltage	2.80V±0.1V
6	Over Current Protection (1st Protection)	Over current detection current/Voltage	120A±20A / 0.15±0.02V
		Detection delay time	MAX20ms
		Release condition	Cut load/charge to recover
7	Short Circuit Protection	Short circuit detection current	external resistance ≤ 0.1Ω
		Detection delay time	MAX320us
		Release condition	Cut load/charge to recover
8	Balance	Balance voltage for single cell	/
		Balance current for single cell	/
9	Temperature Protection	Temperature Switch	YES
10	Resistance	Inner resistance	≤20mΩ
11	Temperature	Operating temperature range	0 ~ +85°C
		Storage temperature range	0 ~ +85°C
12	Size (L*W*T)	L95mm*W60mm*T12mm	

Note: Characteristics subject to change without notice

LiTech Power Co., Ltd

Factory Dongguan: 4F, Bldg B, RuiXin HengYe Industrial Park, TaiXing Rd # 18A, ShiGu District, TangXia Town, DongGuan, China

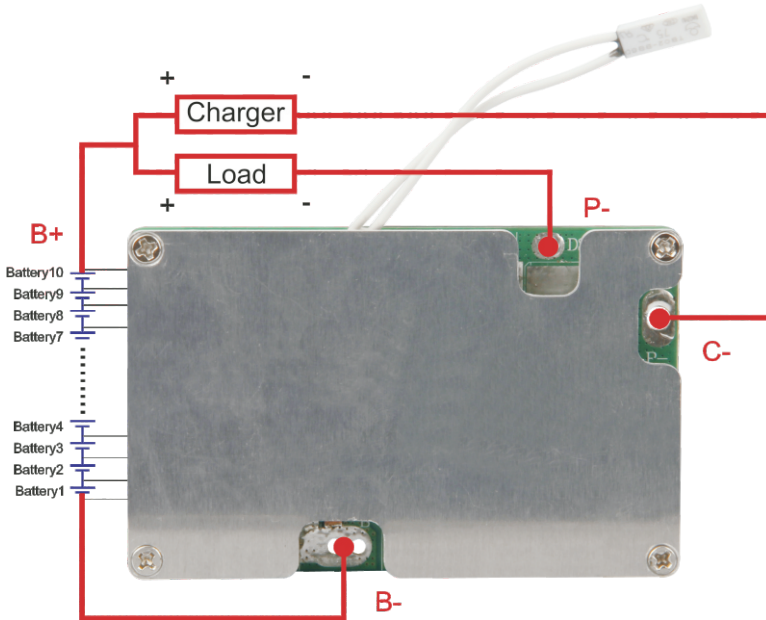
Factory Shenzhen: 3F, Bldg 3, Fulian Industrial Park, Heping Industrial area, Jianhui Rd, Longhua, ShenZhen, China

Tele: +86 769 8203 3052 | Fax: +86 769 82033050
www.LiTechPower.com | info@LiTechPower.com

Specifications and data are subject to change without notice. Contact LiTech Power for latest information.

Copyright © LiTech Power Co.,Ltd. All Rights Reserved.

Connection Diagram:

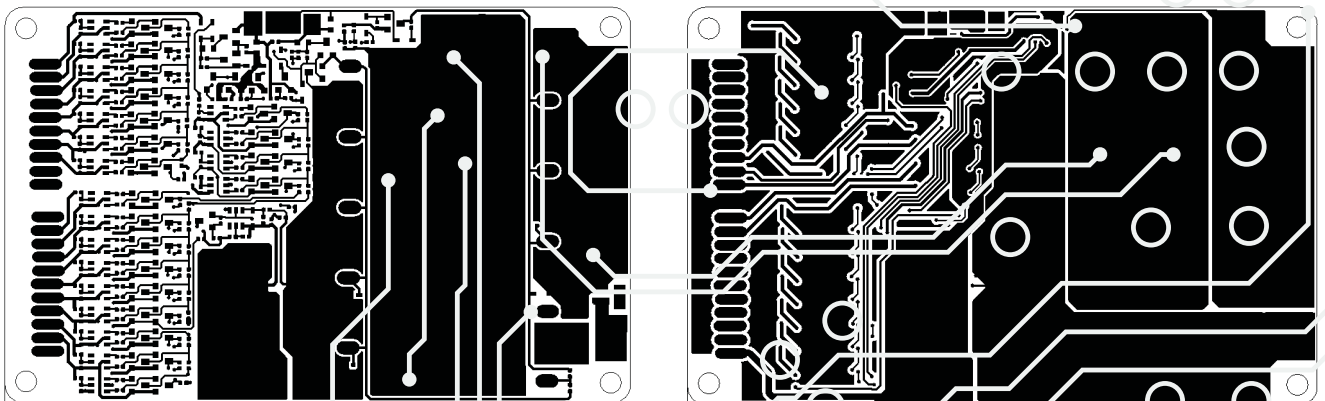


Remarks:

Charge, Discharge at different terminals
 P+=B+/Charge+/Discharge+
 Ch=Charge-
 P-= Discharge-

* BMS with E-Switch//ON-OFF Switch (optional)
 During charging and discharging,
 The Switch should be on(connected)

PCB Layout:



Note: Characteristics subject to change without notice

LiTech Power Co., Ltd

Factory Dongguan: 4F, Bldg B, RuiXin HengYe Industrial Park, TaiXing Rd # 18A, ShiGu District, TangXia Town, DongGuan, China

Factory Shenzhen: 3F, Bldg 3, Fulian Industrial Park, Heping Industrial area, Jianhui Rd, Longhua, ShenZhen, China

Tele: +86 769 8203 3052 | Fax: +86 769 82033050

www.LiTechPower.com | info@LiTechPower.com

Specifications and data are subject to change without notice. Contact LiTech Power for latest information.

Copyright © LiTech Power Co.,Ltd. All Rights Reserved.