

## Data Sheet

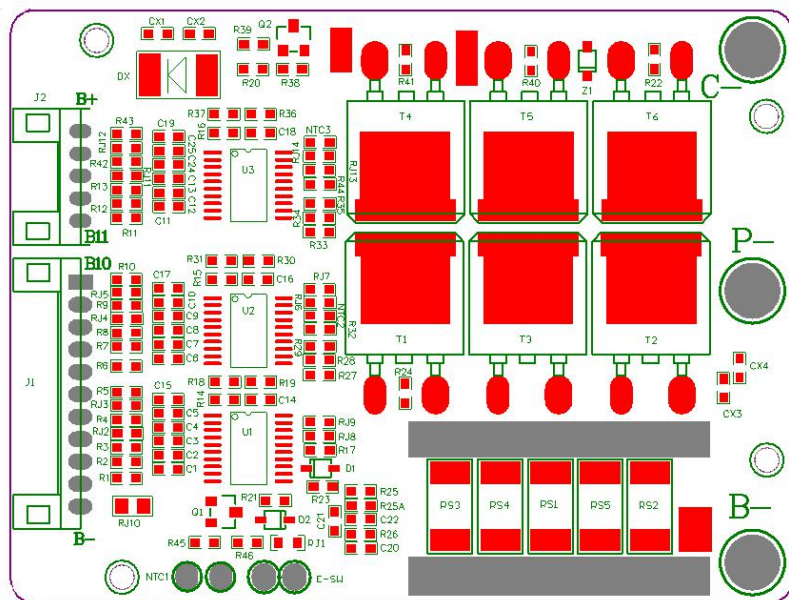
Item	Contents		Criteria( <b>Adjustable</b> )
1	Model	HCX-D706LI14S35A-03 / 77905	14S-35A working current
2	Voltage	Charging voltage	58.8V
3	Current	Maximal continuous charging current	10A
		Maximal continuous discharging current	35A
		Current consumption	≤50μA
4	Overcharge Protection	Over charge detection voltage	4.25V±0.025V
		Over charge detection delay time	0.5S-1.5S
		Over charge release voltage	4.05V±0.05V
5	Over Discharge Protection	Over discharge detection voltage	2.7V±0.05V
		Over discharge detection delay time	0.5S-1.5S
		Over discharge release voltage	2.9V±0.1V
6	Over Current Protection (1 <sup>st</sup> Protection)	Over current detection voltage	0.085±0.01V
		Over current detection current	70A±10A
		Detection delay time	640-825mS
		Release condition	Cut load, automatically recover
7	Over Current Protection (2 <sup>nd</sup> Protection)	Over current detection voltage	0.12±0.02V
		Over current detection current	140A±20A
		Detection delay time	320-405mS
		Release condition	Cut load, automatically recover
9	Short Circuit Protection	Short circuit detection condition	external resistance ≤ 0.1Ω
		Detection delay time	220-610uS
		Detection condition	Cut load, automatically recover
10	Balance	Balance voltage for single cell	/
		Balance current for single cell	/
11	Resistance	Inner resistance	≤20mΩ
12	Temperature	Operating temperature range	-20 ~ +85°C
		Storage temperature range	-20 ~ +125°C
13	Size (L*W*T)	L69.8mm*W52.9mm*T12mm	

\*Note: Characteristics subject to change without notice.

## Connection Diagram

Charge, Discharge at separated port  
 P+=B+=Charge+/Discharge+  
 Ch-=Charge-  
 P-=Discharge-

## Pad description:



\*Note: Characteristics subject to change without notice.