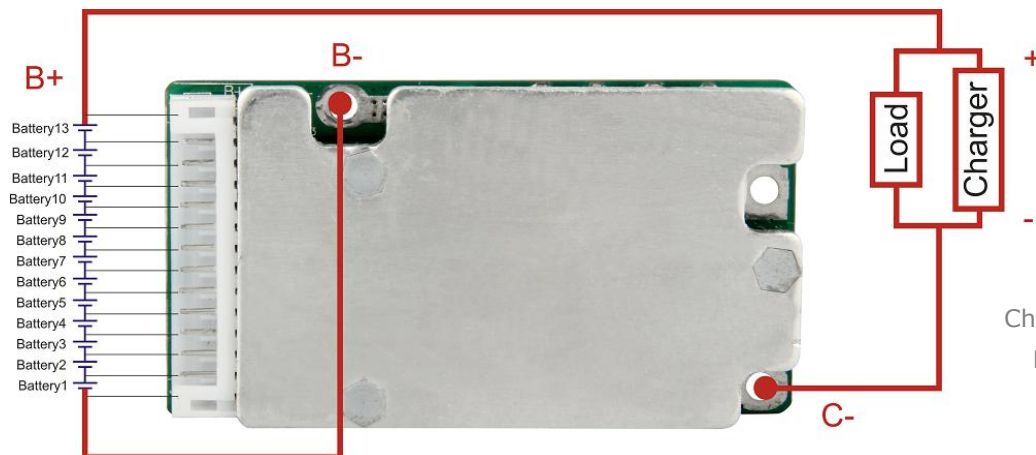


Data Sheet

Item	Contents		Criteria (Adjustable)
1	Model	HCX-D727LI13S15A-05 / 367108	13S-15A working current
2	Voltage	Charging voltage	54.6V
3	Current	Maximal continuous charging current	15A
		Maximal continuous discharging current	15A
		Current consumption	≤50μA
4	Overcharge Protection	Over charge detection voltage	4.25V±0.025V
		Over charge detection delay time	0.5S-1.5S
		Over charge release voltage	4.15V±0.05V
5	Over Discharge Protection	Over discharge detection voltage	2.8V±0.05V
		Over discharge detection delay time	0.5S-1.5S
		Over discharge release voltage	3.0V±0.1V
6	Over Current Protection (1 st Protection)	Over current detection current / Voltage	30A±5A / 0.10±0.01V
		Detection delay time	235mS - 705mS
		Release condition	Cut load / charge to recover
7	Over Current Protection (2 nd Protection)	Over current detection current / Voltage	60A±10A / 0.20±0.02V
		Detection delay time	23.5mS - 70.5mS
		Release condition	Cut load / charge to recover
8	Short Circuit Protection	Short circuit detection current	300A-550A (external resistance ≤ 0.1Ω)
		Detection delay time	<280uS (fixed)
		Detection condition	Cut load / charge to recover
9	Balance	Balance voltage for single cell	/
		Balance current for single cell	/
10	Temperature Protection	Temperature Switch	90°C
		NTC (10KNTC B=3435)	YES
11	Resistance	Inner resistance	≤20mΩ
12	Temperature	Operating temperature range	0 ~ +85°C
		Storage temperature range	0 ~ +85°C
13	Size (L*W*T)	L60mm*W32mm*T11mm	

*Note: Characteristics subject to change without notice.

Connection Diagram



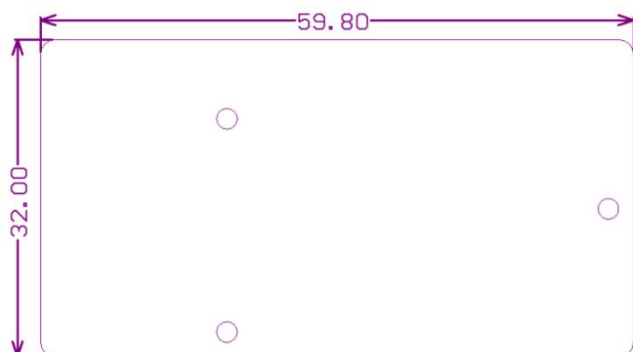
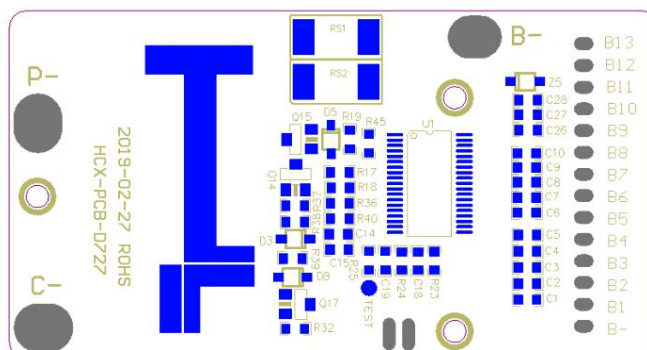
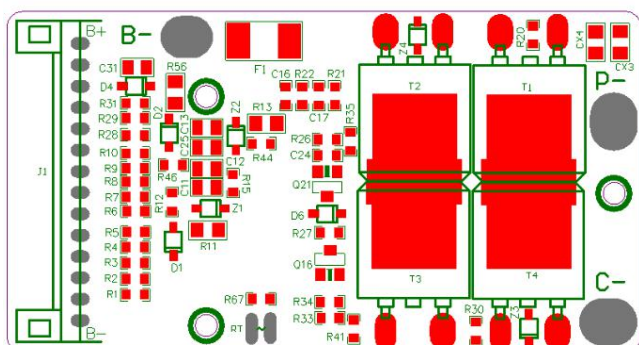
Remarks:

Charge, Discharge at same Port

$P+ = B+ / \text{Charge}+ / \text{Discharge}+$

$P- = \text{Charge}- / \text{Discharge}-$

PCBLAYOUT:



*Note: Characteristics subject to change without notice.