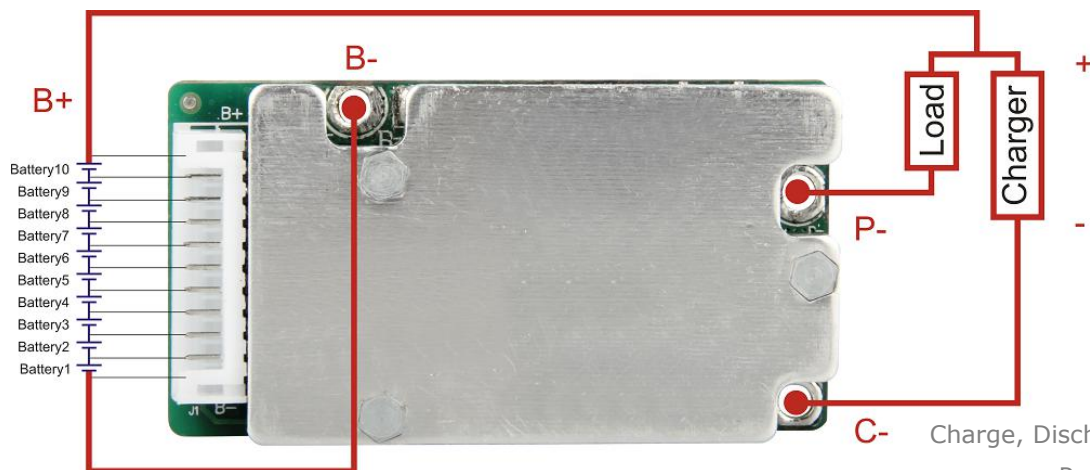


Data Sheet

Item	Contents		Criteria (Adjustable)
1	Model	HCX-D725LI10S20A-04/367107 AAD	10S-20A working current
2	Voltage	Charging voltage	42V
3	Current	Maximal continuous charging current	5A (Charge Over Current $\geq 14A$)
		Maximal continuous discharging current	20A
		Current consumption	$\leq 100\mu A$
4	Overcharge Protection	Over charge detection voltage	$4.25V \pm 0.025V$
		Over charge detection delay time	700mS-1300mS
		Over charge release voltage	$4.15V \pm 0.05V$
5	Over Discharge Protection	Over discharge detection voltage	$2.7V \pm 0.05V$
		Over discharge detection delay time	0.7S-1.3S
		Over discharge release voltage	$3.0V \pm 0.1V$
6	Over Current Protection (1 st Protection)	Over current detection current / Voltage	$40A \pm 10A / 0.1V \pm 0.01V$
		Detection delay time	$330mS \pm 100mS$
		Release condition	Cut load & charge to recover
7	Over Current Protection (2 nd Protection)	Over current detection current / Voltage	$80A \pm 10A / 0.2V \pm 0.02V$
		Detection delay time	$33mS \pm 10mS$
		Release condition	Cut load & charge to recover
8	Short Circuit Protection	Short circuit detection current (Also depends on your pack's capacity)	300A-550A (external resistance $\leq 0.1\Omega$)
		Detection delay time	$< 280\mu S$ (fixed)
		Detection condition	Cut load/charge to recover
9	Balance	Balance voltage for single cell	/
		Balance current for single cell	/
10	Temperature Protection	Temperature Switch	/
		NTC (10KNTC B=3435)	$50^{\circ}C \pm 5^{\circ}C$
11	Resistance	Inner resistance	$\leq 20m\Omega$
12	Temperature	Operating temperature range	0 ~ +85°C
		Storage temperature range	0 ~ +85°C
13	Size (L*W*T)	L60m*W34mm*T10mm	

*Note: Characteristics subject to change without notice.

Connection Diagram



Remarks:

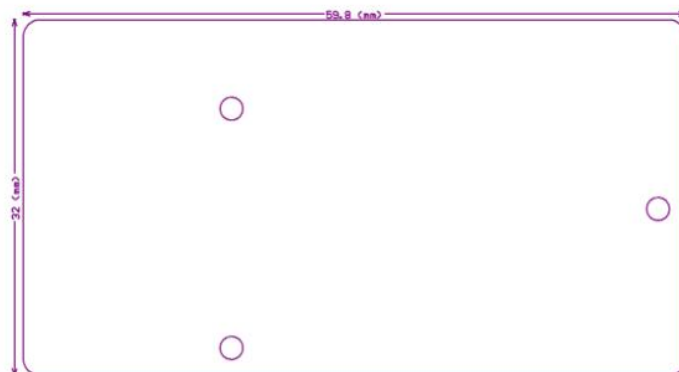
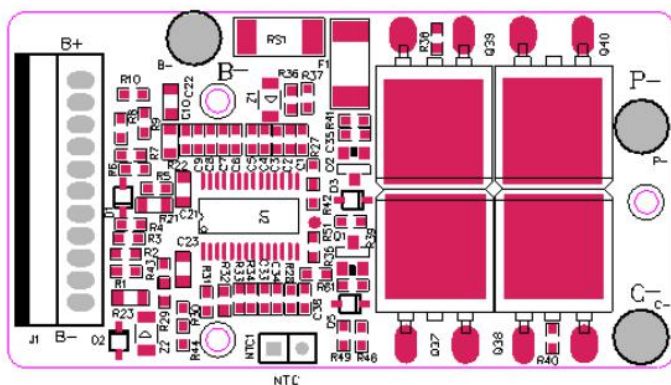
C- Charge, Discharge at different terminals

P+=B+/Charge+/Discharge+

Ch-=Charge-

P-= Discharge-

PCB Layout:



*Note: Characteristics subject to change without notice.