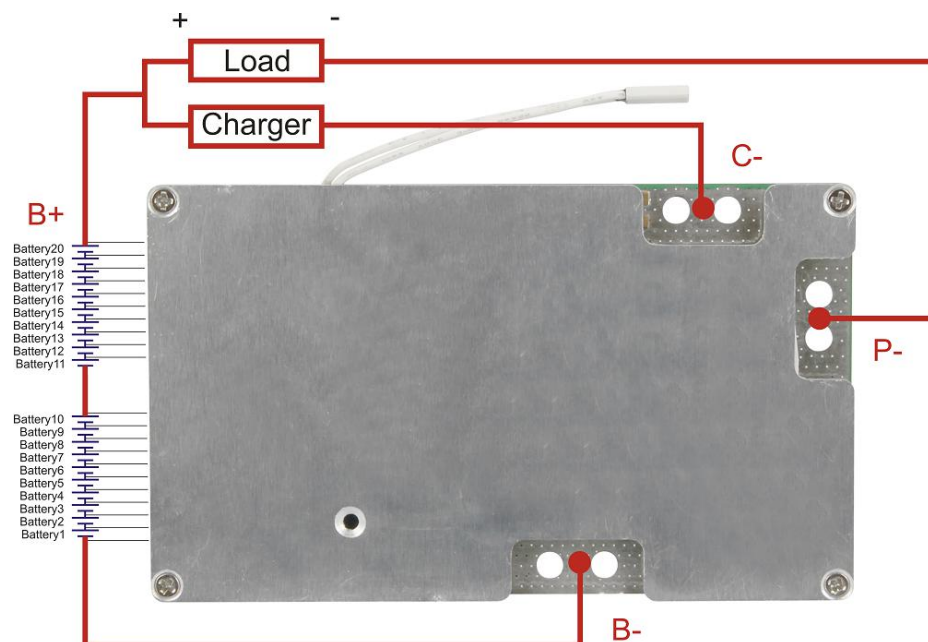


## Data Sheet

Item	Contents		Criteria (Adjustable)
1	Model	HCX-D707LI20S60A-03 / G3M	20S-60A working current
2	Voltage	Charging voltage	84V
3	Current	Maximal continuous charging current	30A
		Maximal continuous discharging current	60A
		Current consumption	≤50μA
4	Overcharge Protection	Over charge detection voltage	4.28V±0.025V
		Over charge detection delay time	1300ms(max)
		Over charge release voltage	4.08V±0.05V
5	Over Discharge Protection	Over discharge detection voltage	2.8V±0.062V
		Over discharge detection delay time	26ms(max)
		Over discharge release voltage	2.8V±0.1V
6	Over Current Protection (1 <sup>st</sup> Protection)	Over current detection current / Voltage	120A±20A / 0.15±0.015V
		Detection delay time	MAX20ms
		Release condition	Cut load / charge to recover
7	Short Circuit Protection	Short circuit detection current	external resistance ≤ 0.1Ω
		Detection delay time	MAX320us
		Detection condition	Cut load/charge to recover
8	Balance	Balance voltage for single cell	4.2V±0.025V
		Balance current for single cell	42mA±10mA
10	Temperature Protection	NTC (10KNTC B=3435)	YES
11	Resistance	Inner resistance	≤20mΩ
12	Temperature	Operating temperature range	0 ~ +85°C
		Storage temperature range	0 ~ +85°C
13	Size (L*W*T)	L135mm*W80mm*T12mm	

\*Note: Characteristics subject to change without notice.

## Connection Diagram



## Remarks:

Charge, Discharge at separated port

P+=B+=Charge+/Discharge+

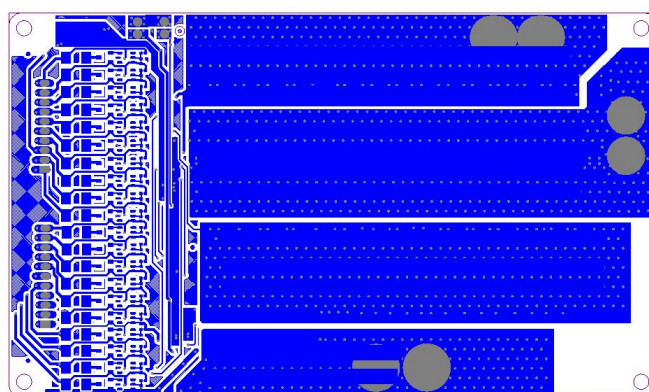
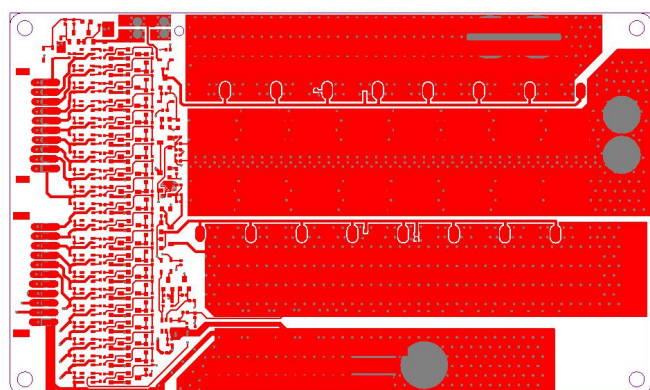
Ch-=Charge-

P-=Discharge-

\* BMS with E-Switch/ON-OFF Switch (optional)

During charging and discharging,  
The Switch should be on(connected)

## PCB Layout:



\*Note: Characteristics subject to change without notice.