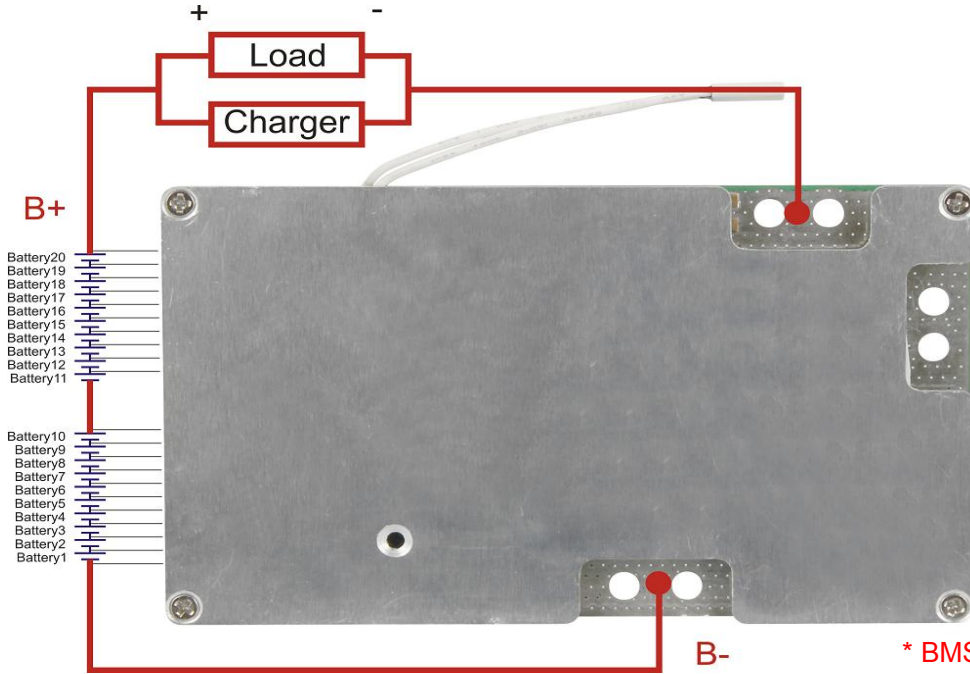


Data Sheet

Item	Contents		Criteria (Adjustable)
1	Model	HCX-D707LF20S50A-03 / 184CJ	20S-50A working current
2	Voltage	Charging voltage	72V
3	Current	Maximal continuous charging current	50A
		Maximal continuous discharging current	50A
		Current consumption	≤50μA
4	Overcharge Protection	Over charge detection voltage	3.65V±0.025V
		Over charge detection delay time	1300ms(max)
		Over charge release voltage	3.65V±0.05V
5	Over Discharge Protection	Over discharge detection voltage	2.5V±0.062V
		Over discharge detection delay time	26ms(max)
		Over discharge release voltage	3.0V±0.1V
6	Over Current Protection (1 st Protection)	Over current detection current / Voltage	100A±10A / 0.15±0.015V
		Detection delay time	MAX20ms
		Release condition	Cut load / charge to recover
7	Short Circuit Protection	Short circuit detection current	external resistance ≤ 0.1Ω
		Detection delay time	MAX320us
		Detection condition	Cut load/charge to recover
8	Balance	Balance voltage for single cell	3.6V±0.025V
		Balance current for single cell	36mA±10mA
10	Temperature Protection	NTC (10KNTC B=3435)	YES
11	Resistance	Inner resistance	≤20mΩ
12	Temperature	Operating temperature range	0 ~ +85°C
		Storage temperature range	0 ~ +85°C
13	Size (L*W*T)	L135mm*W80mm*T12mm	

*Note: Characteristics subject to change without notice.

Connection Diagram

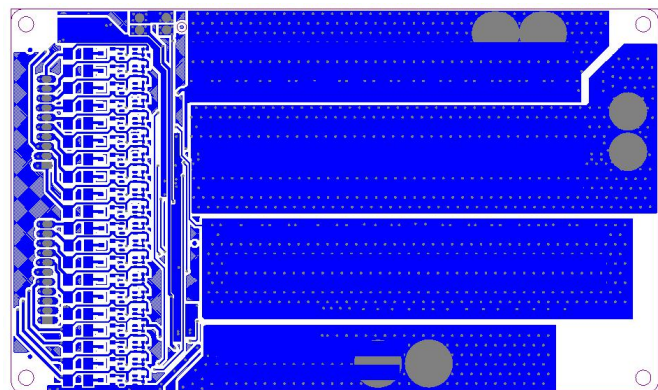
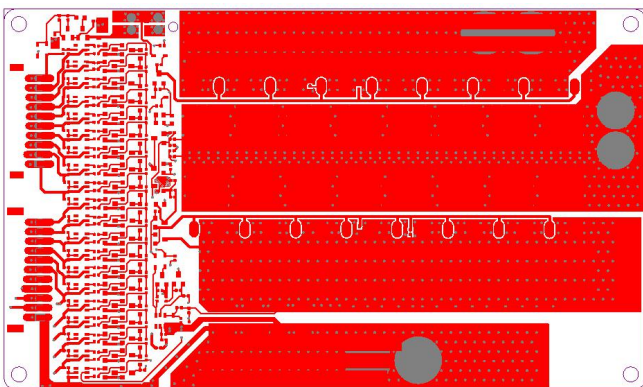


Remarks:

Charge, Discharge at same terminals
 $P+ = B+ / \text{Charge}+ / \text{Discharge}+$
 $P- = \text{Charge}- / \text{Discharge}-$

* BMS with E-Switch/ON-OFF Switch (optional)
 During charging and discharging,
 The Switch should be on(connected)

PCB Layout:



*Note: Characteristics subject to change without notice.